



# Premium Precision Parts *vs.* Typical Parts Used

a **neighborly** company

## High-Cycle TORSION SPRINGS



7' High Door = 64,000 Cycles • 8' High Door = 36,000 Cycles

Others typically use TORSION SPRINGS with the following cycles:

7' High Door = 18,000 Cycles • 8' High Door = 10,000 Cycles



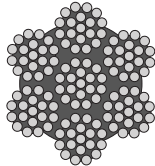
PDS Uses a double loop EXTENSION SPRING

Others typically use a single loop EXTENSION SPRING which is more likely to break.

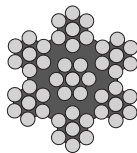
## CABLES

## PDS

## OTHERS



7x19  
7 Strands  
19 Wires Per Strand



7x7  
7 Strands  
7 Wires Per Strand



**888-712-3667**  
**www.GarageDoorSaltLake.com**

## PDS uses a 12' Cable Drum

- Maximum door height.....12'1"
- Rated lifting weight per drum.....375 LBS
- Maximum cable diameter.....5/32"
- 3/8"-16x1" hardened cup point set screws installed with red heads (complies with DASMA 103)
- Color coded (red-left hand) (black-right hand)

## Others typically use an 8' CABLE DRUM

- Mximum door height.....8'1"
- Rated lifting weight per drum.....265 LBS
- Maximum cable diameter.....1/8"
- 3/8"-16x1" hardened cup point set screws installed with red heads (complies with DASMA 103)

## PDS uses a RLR 2-4-13-N ROLLER

- 2" 13 ball nylon tire roller with zinc plated stem
- 4" stem (working length = 3"-3/4")
- Bulged sholder
- Rating: 75-lb load @ 1000,000 12' door cycles
- White nylon tire for quiet operation

## Others typically use a RLR 2-4-N ROLLER

- 2" Nylon roller
- 4" zink plated stem (working length = 3-5/8")
- Bulged sholder
- Rating 50-lb load @ 10,000 8' door cycles

Financing Options From  
**GreenSky**



**IDA**  
International Door Association



a **neighborly** company

**You get the best parts and best service available with Precision Door Service.**





**PDS uses a RLR 2-7-13-N ROLLER**

- 2" 13 ball nylon tire roller with zinc plated stem
- 7" stem (working length = 6"-1/4")
- Bulged sholder
- Rating: 75-lb load @ 1000,000 12' door cycles
- White nylon tire for quiet operation



**Others typically use a RLR 2-9-10 ROLLER**

- 2" 10 ball steel roller
- 9" stem (working length = 8-1/4")
- Bulge sholder
- Rating: 75-lb load @ 15,000 12' door cycles
- Hardened races



**PDS uses a HEAVY DUTY 14 GAUGE 3" SHEAVE with Yellow zinc plating**

- Bored for 3/8" diameter bolt
- Hardened inner race
- Max. cable diameter 3/16"
- 6 solid rivets
- Heavy duty model - 14 Guage Steel



**Others typically use a LIGHT DUTY SHEAVE**

- Bored for 3/8" diameter bolt
- Hardened inner race
- Max. cable diameter 3/16"
- 6 solid rivets
- Heavy duty model - 18 Gauge Steel



**PDS uses a FLANGED BALL BEARING**

- 1" BORE, 2" O.D.
- Inner race offset: 13/64" from bearing plate
- Rated load: 250-lb @ 10,000 8' door cycles
- Hardened steel races & balls



**Others typically use a NYLON BUSHING**

- 1" bore, 2" O.D.
- Inner race offset: 7/32" from bearing plate
- For center support only



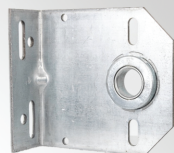
**PDS uses a 14 GAUGE HINGE**

- Bright zinc plated 14 gauge steel hinge leaves
- Full body, 2-3/4" wide
- For use with 7/16" diameter stem rollers



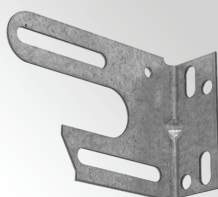
**Others typically use an 18 GAUGE HINGE**

- Bright zinc plated 18 gauge steel hinge leaves
- Full body, 2-3/4" wide
- For use with 7/16" diameter stem rollers



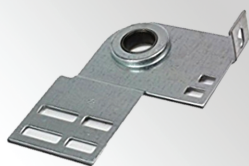
**PDS uses an 11 GAUGE CENTER BEARING BRACKET**

- Bright zinc plated 11 gauge steel
- 3-3/8" bearing center to wall distance
- For use with 3-3/4" I.D. springs and smaller
- 1" bore bearing installed



**Others typically use a 12 GAUGE ADJUSTABLE RESIDENTIAL CENTER BRACKET**

- Bright zinc plated 12 gauge steel
- Adjustable bearing plate
- Adjustable centerline 2-3/8" to 4-1/4"
- For use with steel or nylon bearings



**PDS uses an EBF END BEARING BRACKET**

- Bright zinc plated 12 gauge steel
- Bolts directly to track and wall
- 3-3/8" bearing center to wall distance
- 1" bore bearing installed



**Others typically use this END BEARING BRACKET**

- Bright zinc plated 8 gauge steel
- 6-5/8" x 3" plate
- 1" bore bearing installed

**888-712-3667**  
**www.GarageDoorSaltLake.com**



a neighborly company

**Make the Right Decision Call Precision**

